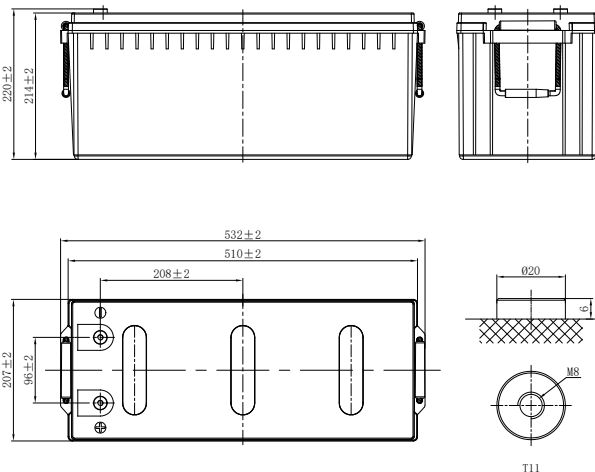


LHR SERIES-HIGH RATE

LHR12750W(A) (12V750W)



CHARACTERISTICS

Item	Specifications	
Rated Voltage	12V	
Nominal Rate (25°C)	$W_{15}, 1.67V/cell$	750W/cell
Nominal Capacity (25°C)	$C_{10}, 1.80V/cell$	185Ah
Dimension	Length	532mm (20.9inches)
	Width	207mm (8.15inches)
	Container Height	214mm (8.43inches)
	Total Height	220mm (8.66inches)
Approx Weight	59.5kg (131.2lbs)	
Terminal	T11(M8)	
Container Material	ABS (UL94 HB or V-0 optional)	
Short-circuit current	3700.0A	
Internal Resistance (25°C)	Approx 2.6 mΩ (Fully charged)	
Operating Temp. Range	Discharge	-20~55°C (-4~131°F)
	Charge	-20~40°C (-4~104°F)
	Storage	-15~50°C (5~122°F)
Nominal Operating Temp. Range	25±3°C (77±5°F)	
Max.Charging Current (25°C)	0.25C	
Charge voltage (25°C)	Standby Use	Equalization Use
	2.25-2.30V/cell	2.30-2.40V/cell
Temp. Coefficient	-3mV/cell/°C	-4mV/cell/°C
	40°C (104°F)	106%
Effect of temp. to Capacity	25°C (77°F)	100%
	0°C (32°F)	86%
	Self Discharge	≤ 3% per month at 25°C (77°F)

DISCHARGE TABLE

Constant Current Discharge (Amperes) at 25°C (77°F)														
F.V/Time	5min	10min	15min	20min	30min	45min	1h	1.5h	2h	3h	4h	5h	8h	10h
1.85V/cell	448.7	358.2	310.6	244.2	169.2	125.6	101.8	74.8	61.2	45.5	36.0	30.5	21.1	18.0
1.80V/cell	510.2	406.6	351.9	276.1	190.8	133.4	105.2	77.0	64.7	47.0	37.3	31.7	21.5	18.5
1.75V/cell	544.7	433.4	374.5	293.0	201.7	141.4	109.6	80.2	67.2	48.1	38.6	32.6	21.7	18.6
1.70V/cell	578.0	458.7	394.8	308.4	212.3	148.4	114.4	83.5	68.8	49.1	39.5	33.3	22.0	18.7
1.67V/cell	613.2	485.0	416.4	324.7	222.8	152.5	115.6	85.7	70.5	50.2	40.0	33.8	22.3	19.0
1.60V/cell	634.9	501.6	429.4	333.0	228.2	156.3	117.7	88.6	71.9	51.5	40.9	34.4	22.4	19.1

Constant Power Discharge (Watts/cell) at 25°C (77°F)														
F.V/Time	5min	10min	15min	20min	30min	45min	1h	1.5h	2h	3h	4h	5h	8h	10h
1.85V/cell	837.9	673.8	588.0	464.5	323.4	241.6	196.9	144.9	119.0	89.0	70.6	60.0	41.8	35.8
1.80V/cell	937.3	753.8	657.8	519.6	361.8	254.8	202.4	148.5	125.3	91.5	73.0	62.1	42.5	36.7
1.75V/cell	983.3	790.7	690.0	545.1	379.5	268.6	209.9	154.0	129.6	93.2	75.2	63.7	42.8	36.8
1.70V/cell	1026.0	825.1	720.0	568.8	396.0	279.9	217.8	159.6	132.1	94.9	76.6	64.9	43.4	37.1
1.67V/cell	1068.8	859.5	750.0	592.5	412.5	286.0	219.0	163.0	134.7	96.5	77.4	65.5	43.8	37.6
1.60V/cell	1083.7	871.5	760.5	600.8	418.3	290.3	221.5	167.3	136.5	98.5	78.8	66.6	44.0	37.7

LHR SERIES-HIGH RATE

LHR12750W(A) (12V750W)



APPLICATIONS

- UPS
- Hospitals and Testing Laboratories
- Emergency Power Supply
- Industrial Process Control Facilities
- Banks and Financial Markets
- Data and Network Operation Centers

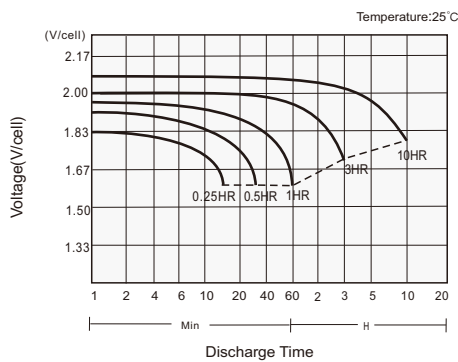
GENERAL FEATURES

- 12 years design life (25°C)
- Excellent high current performance - optimised for short discharge time
- Advanced AGM technology for superior high-rate power
- Long Life Alloy - minimizing grid growth, reducing gassing, and extending battery life
- Epoxy-sealed posts eliminate leaks
- Optimal energy density - saves floor space

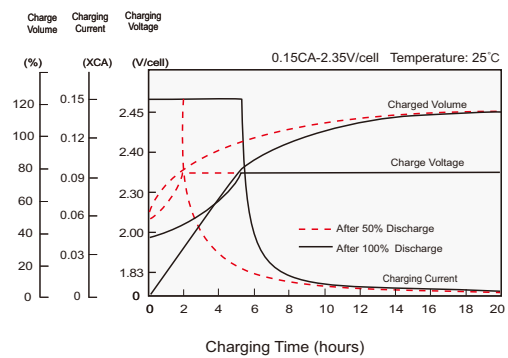
STANDARDS

- Compliance with IEC 60896 standards
- Classified as "Long Life" according to Eurobat
- CE, UL Approved
- Manufactured in Leoch@IATF 16949, ISO 45001, ISO 9001 and ISO 14001 certified production facilities

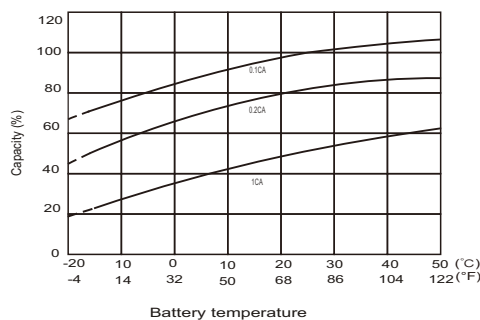
Discharge Characteristics



Charging Characteristics



Effects of Temperature on Capacity



Self Discharge Characteristics

