

LAWN MOWER BATTERY

U1R-250 (12V20Ah)



CHARACTERISTICS

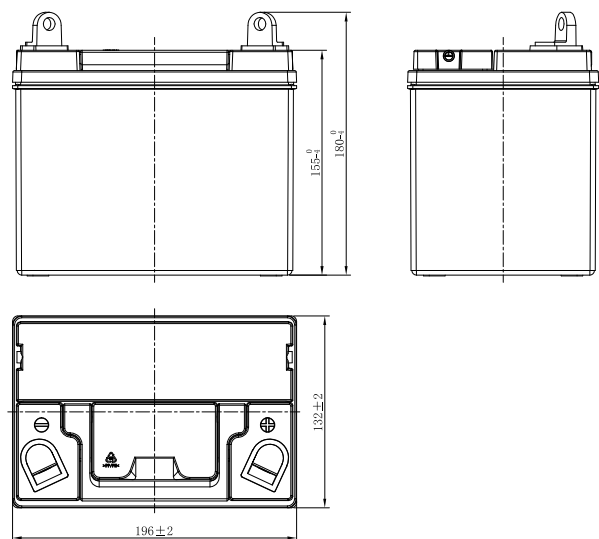
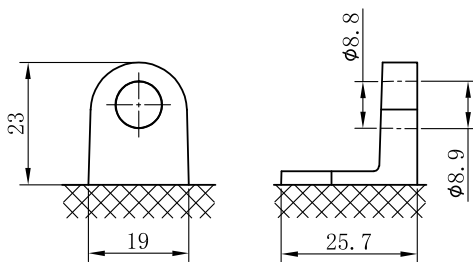
| Item | Specifications | |
|--------------------------------|-------------------|--------------------|
| Nominal Voltage | 12V | |
| Nominal Capacity (20HR) | 20Ah | |
| Reserve Capacity | 24min | |
| Cold Cranking Amps@0°F (-18°C) | 250A | |
| Dimension | Length | 196mm (7.72inches) |
| | Width | 132mm (5.20inches) |
| | Height | 180mm (7.09inches) |
| Approx Weight | 7.4kg (16.3lbs) | |
| Terminal | 4 | |
| Cell layout | 0 | |
| Hold-Down | B0 | |
| Case | Black-PP Material | |
| Cover | Black-PP Material | |
| Handle | TS9 | |

APPLICATIONS

- Garden Tractors
- Lawn Tractors

GENERAL FEATURES

- Design for lawn mower
- Extreme start ability and high capacity
- Absolutely maintenance-free
- Leakage and spill proof
- Vibration resistance
- Long service life



*Values are subject to variation of +/- 5% in normal manufacturing processes.

Leoch International Technology Ltd.
www.leoch.com

Leoch Batteries Pte Ltd
www.leoch.sg

Leoch Battery Corporation
www.leochamericas.com

Leoch Europe S.A.
www.leoch.eu