

### Features Of LiFePO<sub>4</sub> Battery

**Longer Cycle Life:** Offers up to 20 times longer cycle life and five times longer float/calendar life than lead acid battery, helping to minimize replacement cost and reduce total cost of ownership.

**Lighter Weight:** About 40% of the weight of a comparable lead acid battery. A 'drop in' replacement for lead acid batteries.

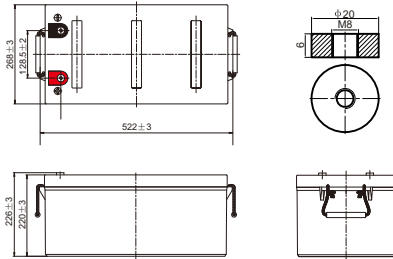
**Higher Power:** Delivers twice power of lead acid battery, even high discharge rate, while maintaining high energy capacity.

**Wider Temperature Range:** -20°C~60°C.

**Superior Safety:** Lithium Iron Phosphate chemistry eliminates the risk of explosion or combustion due to high impact, overcharging or short circuit situation.



### Physical Dimension-mm



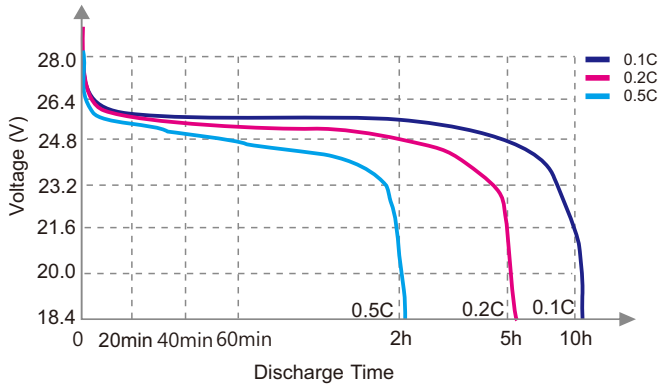
### Typical Applications

- Wheelchairs and scooters
- Solar/wind energy storage
- Back-up power for small UPS
- Golf trolleys & buggies
- Electric bikes
- Tools

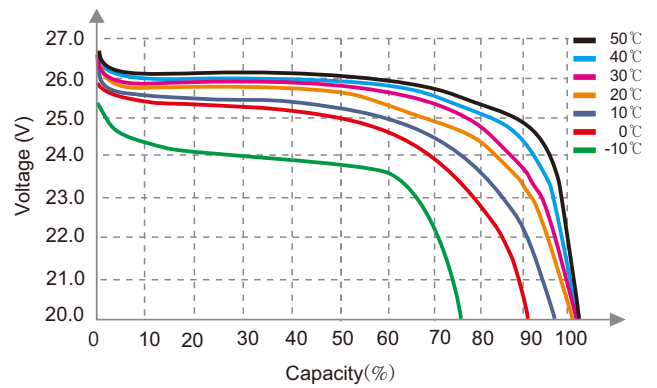
### Specification

|                            |                           |   |
|----------------------------|---------------------------|---|
| Electrical Characteristics | Nominal Voltage           | 25.6V   |
|                            | Nominal Capacity          | 125Ah   |
|                            | Energy                    | 3200Wh  |
|                            | Internal Resistance(AC)   | ≤20mΩ   |
|                            | Cycle Life                | >3000 cycles @0.5C 80%DOD                                 |
|                            | Months Self Discharge     | <3%   |
|                            | Efficiency of Charge      | 100% @0.5C  |
|                            | Efficiency of Discharge   | 96~99% @1C  |
| Standard Charge            | Charge Voltage            | 29.2±0.2V   |
|                            | Charge Mode               | 0.2C to 29.2V, then 29.2V,charge current to 0.02C (CC/CV) |
|                            | Charge Current            | 62A   |
|                            | Max. Charge Current       | 125A  |
|                            | Charge Cut-off Voltage    | 29.2±0.2V   |
| Standard Discharge         | Rated Discharge Current   | 62A   |
|                            | Max. Discharge Current    | 125A  |
|                            | Discharge Cut-off Voltage | 20V   |
| Environmental              | Charge Temperature        | 0 °C to 55 °C (32F to 131F) @60±25% Relative Humidity     |
|                            | Discharge Temperature     | -20 °C to 60 °C (-4F to 140F) @60±25% Relative Humidity   |
|                            | Storage Temperature       | 0 °C to 45 °C (32F to 113F) @60±25% Relative Humidity     |
|                            | IP Class                  | IP65  |
| Mechanical                 | Plastic Case              | ABS   |
|                            | Approx. Dimensions        | 522mm*268mm*226mm (20.55in.*10.55in.*8.90in.)             |
|                            | Approx. Weight            | 35.70kg (78.70lbs)  |
|                            | Terminal                  | M8  |

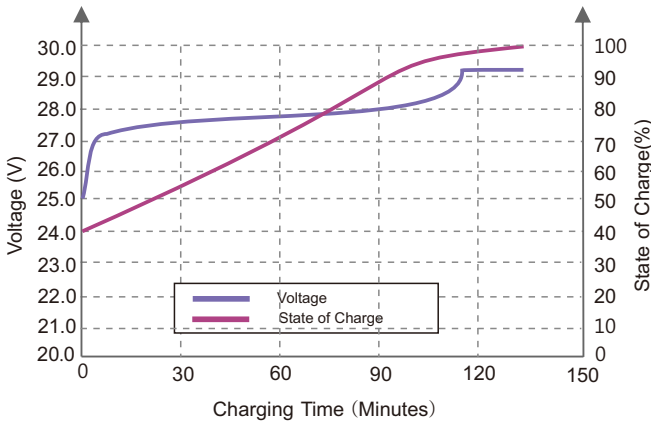
Different Rate Discharge Curve(25°C)



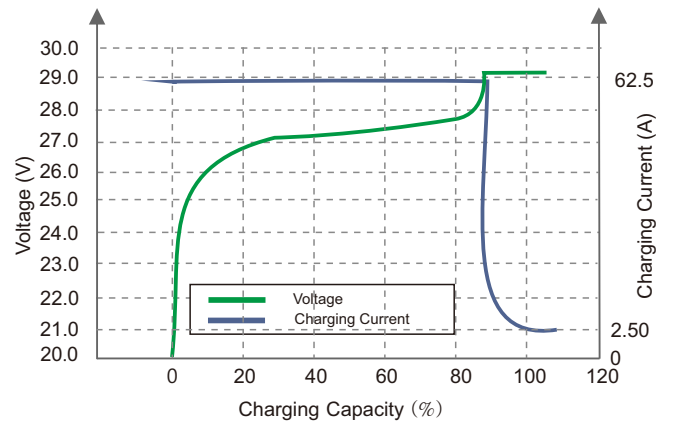
Different Temperature Discharge Curve(0.5C)



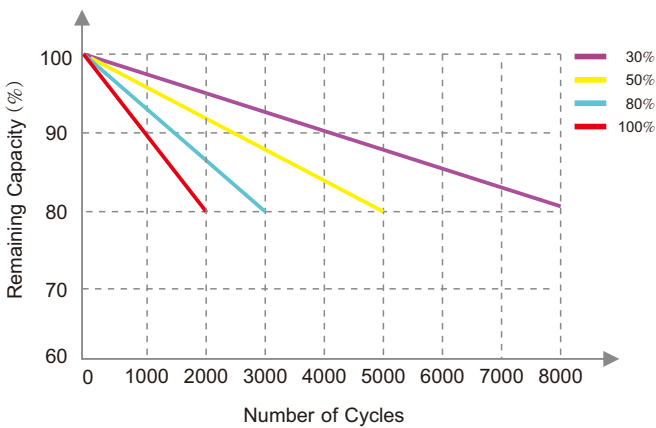
State of Charge Curve(0.5C, 25°C)



Charging Characteristics(0.5C, 25°C)



Different DOD Discharge Cycle Life Curve(0.5C)



Different Temperature Self Discharge Curve

